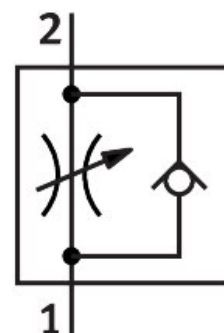


One-way flow control valve GR-3/8-B

Part number: 6308

FESTO



Data sheet

| Feature | Value |
|--|--|
| Valve function | One-way flow control function |
| Pneumatic connection, port 1 | Female thread G3/8 |
| Pneumatic connection, port 2 | Female thread G3/8 |
| Adjustment component | Knurled screw |
| Type of mounting | Either: Front panel mounting With through-hole |
| Standard nominal flow rate in flow control direction | 1010 l/min |
| Standard nominal flow rate in blocked direction | 1150 l/min |
| Operating pressure | 0.01 MPa...1 MPa 0.1 bar...10 bar 1.45 psi...145 psi |
| Ambient temperature | -20 °C...75 °C |
| Material housing | Die-cast zinc |
| Explosion protection | The information in the certificate must be observed! Zone 1 (ATEX) Zone 2 (ATEX) Zone 21 (ATEX) Zone 22 (ATEX) |
| Mounting position | optional |
| Operating medium | Compressed air to ISO 8573-1:2010 [7:4:4] |
| Note on operating and pilot medium | Lubricated operation possible (in which case lubricated operation will always be required) |
| LABS (PWIS) conformity | VDMA24364-B1/B2-L |
| Media temperature | -20 °C...75 °C |
| Product weight | 225 g |
| Note on materials | RoHS-compliant |
| Material adjusting screw | Brass |