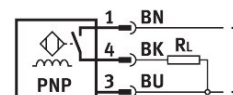
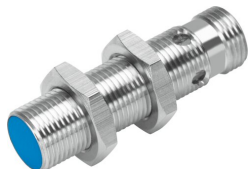


# Proximity sensor SIEH-M12B-PS-S-L-CR

Part number: 538251

**FESTO**



## Data sheet

| Feature                                              | Value                                                                                                                                           |
|------------------------------------------------------|-------------------------------------------------------------------------------------------------------------------------------------------------|
| Conforms to standard                                 | EN 60947-5-2                                                                                                                                    |
| Approval                                             | RCM trademark<br>c UL us listed (OL)                                                                                                            |
| CE mark (see declaration of conformity)              | To EU EMC Directive<br>In accordance with EU RoHS Directive                                                                                     |
| UKCA marking (see declaration of conformity)         | To UK instructions for EMC (UK-E)<br>To UK RoHS instructions (UK-R)                                                                             |
| Rated operating distance                             | 6 mm                                                                                                                                            |
| Assured operating distance                           | 4.86 mm                                                                                                                                         |
| Reduction factors                                    | Aluminium = 1.0<br>Stainless steel, 1 mm thick = 0.45<br>Stainless steel, 2 mm thick = 0.9<br>Copper = 0.85<br>Brass = 1.3<br>Steel St 37 = 1.0 |
| Ambient temperature                                  | -25 °C...70 °C                                                                                                                                  |
| Switching output                                     | PNP                                                                                                                                             |
| Switching element function                           | N/O contact                                                                                                                                     |
| Reproducibility of switching values FS               | 0.3 mm                                                                                                                                          |
| Hysteresis                                           | 0.73 mm                                                                                                                                         |
| Max. switching frequency                             | 600 Hz                                                                                                                                          |
| Max. output current                                  | 200 mA                                                                                                                                          |
| Voltage drop                                         | 2 V                                                                                                                                             |
| Inductive protective circuit                         | Integrated<br>Output current < 100 mA<br>And switching frequency < 10 Hz                                                                        |
| Short circuit current rating                         | Pulsed                                                                                                                                          |
| Operational voltage range DC                         | 10 V...30 V                                                                                                                                     |
| Residual ripple                                      | 20%                                                                                                                                             |
| No-load supply current                               | 12 mA                                                                                                                                           |
| Reverse polarity protection                          | For all electrical connections                                                                                                                  |
| Electrical connection 1, connection type             | Plugs                                                                                                                                           |
| Electrical connection 1, connector system            | M12x1, A-coded to EN 61076-2-101                                                                                                                |
| Electrical connection 1, number of connections/cores | 4                                                                                                                                               |

| Feature                                              | Value                                     |
|------------------------------------------------------|-------------------------------------------|
| Electrical connection 1, type of mounting            | Screw-type lock<br>Not rotatable          |
| Electrical connection 1, compatible type of mounting | Compatible with rotatable screw-type lock |
| Size                                                 | M12                                       |
| Type of mounting                                     | Via lock nut                              |
| Mounting type                                        | Flush                                     |
| Product weight                                       | 28 g                                      |
| Material housing                                     | High-alloy steel                          |
| Switching status indication                          | Yellow LED                                |
| Ambient temperature with moving cable                | -5 °C...70 °C                             |
| Degree of protection                                 | IP67<br>IP69K                             |
| Housing pressure resistance                          | 80 bar                                    |
| Corrosion resistance class CRC                       | 2 - Moderate corrosion stress             |
| LABS (PWIS) conformity                               | VDMA24364-B2-L                            |
| Additional information for sensor selection          | with increased sensing distance           |
| Electrical output                                    | PNP                                       |
| Selection of sensor design                           | Stainless steel housing                   |