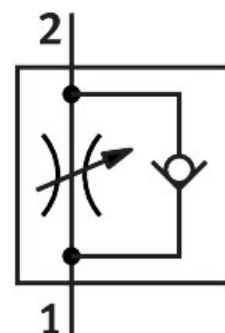


# One-way flow control valve GRLA-1/2-B

Part number: 151179

**FESTO**



## Data sheet

Feature	Value
Valve function	Exhaust air one-way flow control function
Pneumatic connection, port 1	G1/2
Pneumatic connection, port 2	G1/2
Adjustment component	Slotted head screw
Type of mounting	Screw-in
Standard nominal flow rate in flow control direction	2100 l/min
Standard nominal flow rate in blocked direction	1550 l/min...2200 l/min
Operating pressure	0.3 bar...10 bar
Ambient temperature	-10 °C...60 °C
Maritime classification	See certificate
Explosion protection	The information in the certificate must be observed! Zone 1 (ATEX) Zone 2 (ATEX) Zone 21 (ATEX) Zone 22 (ATEX)
Mounting position	optional
Standard flow rate in flow control direction 0.6->0 MPa (6->0 bar, 87->0 psi)	4000 l/min
Standard flow rate in non-return direction 0.6->0 MPa (6->0 bar, 87->0 psi)	2950 l/min...4190 l/min
Operating medium	Compressed air to ISO 8573-1:2010 [7:4:4]
Note on operating and pilot medium	Lubricated operation possible (in which case lubricated operation will always be required)
LABS (PWIS) conformity	VDMA24364-B1/B2-L
Cleanroom class	Class 4 according to ISO 14644-1
Media temperature	-10 °C...60 °C
Max. tightening torque	40 Nm
Product weight	204 g

Feature	Value
Note on materials	RoHS-compliant
Material seals	NBR
Material hollow bolt	Wrought aluminium alloy
Material adjusting screw	Brass
Material nut	Wrought aluminium alloy
Material swivel fitting	Die-cast zinc